



## AP<sup>®</sup> Physics B 2003 Free-Response Questions

**The materials included in these files are intended for use by AP teachers for course and exam preparation; permission for any other use must be sought from the Advanced Placement Program<sup>®</sup>. Teachers may reproduce them, in whole or in part, in limited quantities for noncommercial, face-to-face teaching purposes. This permission does not apply to any third-party copyrights contained herein. This material may not be mass distributed, electronically or otherwise. These materials and any copies made of them may not be resold, and the copyright notices must be retained as they appear here.**

These materials were produced by Educational Testing Service<sup>®</sup> (ETS<sup>®</sup>), which develops and administers the examinations of the Advanced Placement Program for the College Board. The College Board and Educational Testing Service (ETS) are dedicated to the principle of equal opportunity, and their programs, services, and employment policies are guided by that principle.

The College Board is a national nonprofit membership association whose mission is to prepare, inspire, and connect students to college and opportunity. Founded in 1900, the association is composed of more than 4,300 schools, colleges, universities, and other educational organizations. Each year, the College Board serves over three million students and their parents, 22,000 high schools, and 3,500 colleges through major programs and services in college admissions, guidance, assessment, financial aid, enrollment, and teaching and learning. Among its best-known programs are the SAT<sup>®</sup>, the PSAT/NMSQT<sup>®</sup>, and the Advanced Placement Program<sup>®</sup> (AP<sup>®</sup>). The College Board is committed to the principles of equity and excellence, and that commitment is embodied in all of its programs, services, activities, and concerns.

For further information, visit [www.collegeboard.com](http://www.collegeboard.com)

Copyright © 2003 College Entrance Examination Board. All rights reserved. College Board, Advanced Placement Program, AP, AP Vertical Teams, APCD, Pacesetter, Pre-AP, SAT, Student Search Service, and the acorn logo are registered trademarks of the College Entrance Examination Board.

AP Central is a trademark owned by the College Entrance Examination Board. PSAT/NMSQT is a registered trademark jointly owned by the College Entrance Examination Board and the National Merit Scholarship Corporation. Educational Testing Service and ETS are registered trademarks of Educational Testing Service. Other products and services may be trademarks of their respective owners.

For the College Board's online home for AP professionals, visit AP Central at [apcentral.collegeboard.com](http://apcentral.collegeboard.com).

TABLE OF INFORMATION FOR 2003

CONSTANTS AND CONVERSION FACTORS		UNITS		PREFIXES			
		Name	Symbol	Factor	Prefix	Symbol	
1 unified atomic mass unit,	$1 \text{ u} = 1.66 \times 10^{-27} \text{ kg}$ $= 931 \text{ MeV}/c^2$	meter	m	$10^9$	giga	G	
Proton mass,	$m_p = 1.67 \times 10^{-27} \text{ kg}$	kilogram	kg	$10^6$	mega	M	
Neutron mass,	$m_n = 1.67 \times 10^{-27} \text{ kg}$	second	s	$10^3$	kilo	k	
Electron mass,	$m_e = 9.11 \times 10^{-31} \text{ kg}$	ampere	A	$10^{-2}$	centi	c	
Magnitude of the electron charge,	$e = 1.60 \times 10^{-19} \text{ C}$	kelvin	K	$10^{-3}$	milli	m	
Avogadro's number,	$N_0 = 6.02 \times 10^{23} \text{ mol}^{-1}$	mole	mol	$10^{-6}$	micro	$\mu$	
Universal gas constant,	$R = 8.31 \text{ J}/(\text{mol} \cdot \text{K})$	hertz	Hz	$10^{-9}$	nano	n	
Boltzmann's constant,	$k_B = 1.38 \times 10^{-23} \text{ J/K}$	newton	N	$10^{-12}$	pico	p	
Speed of light,	$c = 3.00 \times 10^8 \text{ m/s}$	pascal	Pa	VALUES OF TRIGONOMETRIC FUNCTIONS FOR COMMON ANGLES			
Planck's constant,	$h = 6.63 \times 10^{-34} \text{ J} \cdot \text{s}$ $= 4.14 \times 10^{-15} \text{ eV} \cdot \text{s}$	joule	J				
	$hc = 1.99 \times 10^{-25} \text{ J} \cdot \text{m}$ $= 1.24 \times 10^3 \text{ eV} \cdot \text{nm}$	watt	W	$\theta$	$\sin \theta$	$\cos \theta$	$\tan \theta$
Vacuum permittivity,	$\epsilon_0 = 8.85 \times 10^{-12} \text{ C}^2/\text{N} \cdot \text{m}^2$	coulomb	C	$0^\circ$	0	1	0
Coulomb's law constant,	$k = 1/4\pi\epsilon_0 = 9.0 \times 10^9 \text{ N} \cdot \text{m}^2/\text{C}^2$	volt	V	$30^\circ$	1/2	$\sqrt{3}/2$	$\sqrt{3}/3$
Vacuum permeability,	$\mu_0 = 4\pi \times 10^{-7} (\text{T} \cdot \text{m})/\text{A}$	ohm	$\Omega$	$37^\circ$	3/5	4/5	3/4
Magnetic constant,	$k' = \mu_0/4\pi = 10^{-7} (\text{T} \cdot \text{m})/\text{A}$	henry	H	$45^\circ$	$\sqrt{2}/2$	$\sqrt{2}/2$	1
Universal gravitational constant,	$G = 6.67 \times 10^{-11} \text{ m}^3/\text{kg} \cdot \text{s}^2$	farad	F	$53^\circ$	4/5	3/5	4/3
Acceleration due to gravity at the Earth's surface,	$g = 9.8 \text{ m/s}^2$	tesla	T	$60^\circ$	$\sqrt{3}/2$	1/2	$\sqrt{3}$
1 atmosphere pressure,	1 atm = $1.0 \times 10^5 \text{ N/m}^2$ $= 1.0 \times 10^5 \text{ Pa}$	degree	$^\circ$	$90^\circ$	1	0	$\infty$
1 electron volt,	1 eV = $1.60 \times 10^{-19} \text{ J}$	Celsius	$^\circ\text{C}$				
		electron-volt	eV				

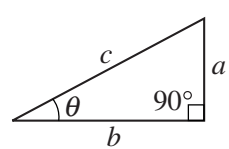
The following conventions are used in this examination.

- I. Unless otherwise stated, the frame of reference of any problem is assumed to be inertial.
- II. The direction of any electric current is the direction of flow of positive charge (conventional current).
- III. For any isolated electric charge, the electric potential is defined as zero at an infinite distance from the charge.
- IV. For mechanics and thermodynamics equations,  $W$  represents the work done on a system.

## ADVANCED PLACEMENT PHYSICS B EQUATIONS FOR 2003

NEWTONIAN MECHANICS	ELECTRICITY AND MAGNETISM
$v = v_0 + at$ $x = x_0 + v_0 t + \frac{1}{2} at^2$ $v^2 = v_0^2 + 2a(x - x_0)$ $\Sigma \mathbf{F} = \mathbf{F}_{net} = m\mathbf{a}$ $F_{fric} \leq \mu N$ $a_c = \frac{v^2}{r}$ $\tau = rF \sin \theta$ $\mathbf{p} = m\mathbf{v}$ $\mathbf{J} = \mathbf{F}\Delta t = \Delta\mathbf{p}$ $K = \frac{1}{2} mv^2$ $\Delta U_g = mgh$ $W = \mathbf{F} \cdot \Delta\mathbf{r} = F\Delta r \cos \theta$ $P_{avg} = \frac{W}{\Delta t}$ $P = \mathbf{F} \cdot \mathbf{v} = Fv \cos \theta$ $\mathbf{F}_s = -k\mathbf{x}$ $U_s = \frac{1}{2} kx^2$ $T_s = 2\pi\sqrt{\frac{m}{k}}$ $T_p = 2\pi\sqrt{\frac{\ell}{g}}$ $T = \frac{1}{f}$ $F_G = -\frac{Gm_1m_2}{r^2}$ $U_G = -\frac{Gm_1m_2}{r}$	$F = \frac{1}{4\pi\epsilon_0} \frac{q_1q_2}{r^2}$ $\mathbf{E} = \frac{\mathbf{F}}{q}$ $U_E = qV = \frac{1}{4\pi\epsilon_0} \frac{q_1q_2}{r}$ $E_{avg} = -\frac{V}{d}$ $V = \frac{1}{4\pi\epsilon_0} \sum_i \frac{q_i}{r_i}$ $C = \frac{Q}{V}$ $C = \frac{\epsilon_0 A}{d}$ $U_c = \frac{1}{2} QV = \frac{1}{2} CV^2$ $I_{avg} = \frac{\Delta Q}{\Delta t}$ $R = \frac{\rho\ell}{A}$ $V = IR$ $P = IV$ $C_p = \sum_i C_i$ $\frac{1}{C_s} = \sum_i \frac{1}{C_i}$ $R_s = \sum_i R_i$ $\frac{1}{R_p} = \sum_i \frac{1}{R_i}$ $F_B = qvB \sin \theta$ $F_B = BIl \sin \theta$ $B = \frac{\mu_0 I}{2\pi r}$ $\phi_m = \mathbf{B} \cdot \mathbf{A} = BA \cos \theta$ $\mathcal{E}_{avg} = -\frac{\Delta\phi_m}{\Delta t}$ $\mathcal{E} = B\ell v$
<i>a</i> = acceleration <i>F</i> = force <i>f</i> = frequency <i>h</i> = height <i>J</i> = impulse <i>K</i> = kinetic energy <i>k</i> = spring constant <i>ℓ</i> = length <i>m</i> = mass <i>N</i> = normal force <i>P</i> = power <i>p</i> = momentum <i>r</i> = radius or distance <i>r</i> = position vector <i>T</i> = period <i>t</i> = time <i>U</i> = potential energy <i>v</i> = velocity or speed <i>W</i> = work done on a system <i>x</i> = position <i>μ</i> = coefficient of friction <i>θ</i> = angle <i>τ</i> = torque	<i>A</i> = area <i>B</i> = magnetic field <i>C</i> = capacitance <i>d</i> = distance <i>E</i> = electric field <i>ℰ</i> = emf <i>F</i> = force <i>I</i> = current <i>ℓ</i> = length <i>P</i> = power <i>Q</i> = charge <i>q</i> = point charge <i>R</i> = resistance <i>r</i> = distance <i>t</i> = time <i>U</i> = potential (stored) energy <i>V</i> = electric potential or potential difference <i>v</i> = velocity or speed <i>ρ</i> = resistivity <i>φ<sub>m</sub></i> = magnetic flux

**ADVANCED PLACEMENT PHYSICS B EQUATIONS FOR 2003**

<p><b>FLUID MECHANICS AND THERMAL PHYSICS</b></p> $p = p_0 + \rho gh$ $F_{buoy} = \rho Vg$ $A_1 v_1 = A_2 v_2$ $p + \rho gy + \frac{1}{2} \rho v^2 = \text{const.}$ $\Delta \ell = \alpha \ell_0 \Delta T$ $Q = mL$ $Q = mc\Delta T$ $p = \frac{F}{A}$ $pV = nRT$ $K_{avg} = \frac{3}{2} k_B T$ $v_{rms} = \sqrt{\frac{3RT}{M}} = \sqrt{\frac{3k_B T}{\mu}}$ $W = -p\Delta V$ $Q = nc\Delta T$ $\Delta U = Q + W$ $\Delta U = nc_V \Delta T$ $e = \left  \frac{W}{Q_H} \right $ $e_c = \frac{T_H - T_C}{T_H}$	<p><b>WAVES AND OPTICS</b></p> $v = f\lambda$ $n = \frac{c}{v}$ $n_1 \sin \theta_1 = n_2 \sin \theta_2$ $\sin \theta_c = \frac{n_2}{n_1}$ $\frac{1}{s_i} + \frac{1}{s_o} = \frac{1}{f}$ $M = \frac{h_i}{h_o} = -\frac{s_i}{s_o}$ $f = \frac{R}{2}$ $d \sin \theta = m\lambda$ $x_m \approx \frac{m\lambda L}{d}$
<p><b>ATOMIC AND NUCLEAR PHYSICS</b></p> $E = hf = pc$ $K_{max} = hf - \phi$ $\lambda = \frac{h}{p}$ $\Delta E = (\Delta m)c^2$	<p><b>GEOMETRY AND TRIGONOMETRY</b></p> <p>Rectangle  <math>A = bh</math></p> <p>Triangle  <math>A = \frac{1}{2} bh</math></p> <p>Circle  <math>A = \pi r^2</math>  <math>C = 2\pi r</math></p> <p>Parallelepiped  <math>V = \ell wh</math></p> <p>Cylinder  <math>V = \pi r^2 \ell</math>  <math>S = 2\pi r \ell + 2\pi r^2</math></p> <p>Sphere  <math>V = \frac{4}{3} \pi r^3</math>  <math>S = 4\pi r^2</math></p> <p>Right Triangle</p> $a^2 + b^2 = c^2$ $\sin \theta = \frac{a}{c}$ $\cos \theta = \frac{b}{c}$ $\tan \theta = \frac{a}{b}$ 

# 2003 AP<sup>®</sup> PHYSICS B FREE-RESPONSE QUESTIONS

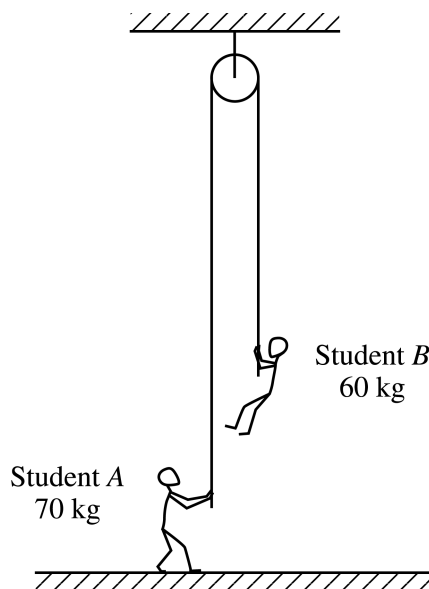
## PHYSICS B

### SECTION II

Time—90 minutes

7 Questions

**Directions:** Answer all seven questions, which are weighted according to the points indicated. The suggested time is about 15 minutes for answering each of questions 1-4, and about 10 minutes for answering each of questions 5-7. The parts within a question may not have equal weight. Show all your work in the pink booklet in the spaces provided after each part, NOT in this green insert.



1. (15 points)

A rope of negligible mass passes over a pulley of negligible mass attached to the ceiling, as shown above. One end of the rope is held by Student A of mass 70 kg, who is at rest on the floor. The opposite end of the rope is held by Student B of mass 60 kg, who is suspended at rest above the floor.

- (a) On the dots below that represent the students, draw and label free-body diagrams showing the forces on Student A and on Student B.

● B

● A

- (b) Calculate the magnitude of the force exerted by the floor on Student A.

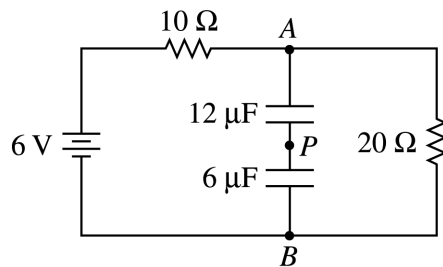
Student B now climbs up the rope at a constant acceleration of  $0.25 \text{ m/s}^2$  with respect to the floor.

- (c) Calculate the tension in the rope while Student B is accelerating.  
(d) As Student B is accelerating, is Student A pulled upward off the floor? Justify your answer.  
(e) With what minimum acceleration must Student B climb up the rope to lift Student A upward off the floor?

Copyright © 2003 by College Entrance Examination Board. All rights reserved.  
Available to AP professionals at [apcentral.collegeboard.com](http://apcentral.collegeboard.com) and to  
students and parents at [www.collegeboard.com/apstudents](http://www.collegeboard.com/apstudents).

**GO ON TO THE NEXT PAGE.**

## 2003 AP<sup>®</sup> PHYSICS B FREE-RESPONSE QUESTIONS



2. (15 points)

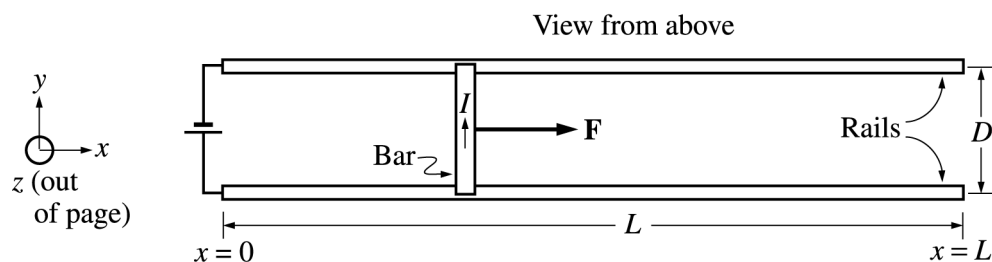
A circuit contains two resistors ( $10\ \Omega$  and  $20\ \Omega$ ) and two capacitors ( $12\ \mu\text{F}$  and  $6\ \mu\text{F}$ ) connected to a  $6\ \text{V}$  battery, as shown in the diagram above. The circuit has been connected for a long time.

- (a) Calculate the total capacitance of the circuit.
- (b) Calculate the current in the  $10\ \Omega$  resistor.
- (c) Calculate the potential difference between points  $A$  and  $B$ .
- (d) Calculate the charge stored on one plate of the  $6\ \mu\text{F}$  capacitor.
- (e) The wire is cut at point  $P$ . Will the potential difference between points  $A$  and  $B$  increase, decrease, or remain the same?

increase     
  decrease     
  remain the same

Justify your answer.

## 2003 AP<sup>®</sup> PHYSICS B FREE-RESPONSE QUESTIONS



3. (15 points)

A rail gun is a device that propels a projectile using a magnetic force. A simplified diagram of this device is shown above. The projectile in the picture is a bar of mass  $M$  and length  $D$ , which has a constant current  $I$  flowing through it in the  $+y$ -direction, as shown. The space between the thin frictionless rails contains a uniform magnetic field  $\mathbf{B}$ , perpendicular to the plane of the page. The magnetic field and rails extend for a distance  $L$ . The magnetic field exerts a constant force  $\mathbf{F}$  on the projectile, as shown.

Express all algebraic answers to the following parts in terms of the magnitude  $F$  of the constant magnetic force, other quantities given above, and fundamental constants.

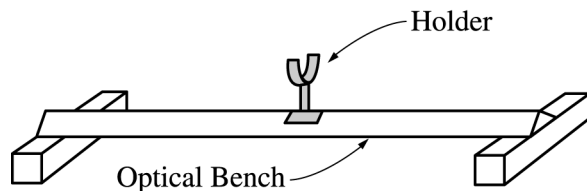
- Determine the position  $x$  of the projectile as a function of time  $t$  while it is on the rail if the projectile starts from rest at  $x = 0$  when  $t = 0$ .
- Determine the speed of the projectile as it leaves the right-hand end of the track.
- Determine the energy supplied to the projectile by the rail gun.
- In what direction must the magnetic field  $\mathbf{B}$  point in order to create the force  $\mathbf{F}$ ? Explain your reasoning.
- Calculate the speed of the bar when it reaches the end of the rail given the following values.

$$B = 5 \text{ T} \quad L = 10 \text{ m} \quad I = 200 \text{ A} \quad M = 0.5 \text{ kg} \quad D = 10 \text{ cm}$$

## 2003 AP<sup>®</sup> PHYSICS B FREE-RESPONSE QUESTIONS

4. (15 points)

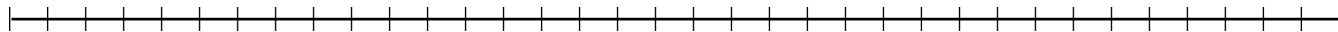
In your physics lab, you have a concave mirror with radius of curvature  $r = 60$  cm. You are assigned the task of finding experimentally the location of a lit candle such that the mirror will produce an image that is 4 times the height of the lit candle.



You have an optical bench, which is a long straight track as shown above. Objects in holders can be attached at any location along the bench. In addition to the concave mirror and the lit candle in holders, you also have the following equipment.

- |  |   |  |
|--|---|--|
| <input type="checkbox"/> convex mirror in holder | <input type="checkbox"/> concave lens in holder | <input type="checkbox"/> convex lens in holder |
| <input type="checkbox"/> meter stick             | <input type="checkbox"/> ruler                  | <input type="checkbox"/> screen in holder      |

- (a) Briefly list the steps in your procedure that will lead you to the location of the lit candle that produces the desired image. Include definitions of any parameters that you will measure.
- (b) On the list of equipment before part (a) place check marks beside each additional piece of equipment you will need to do this experiment.
- (c) On the scale below, draw a ray diagram of your lab setup in part (a) to show the locations of the candle, the mirror, and the image.



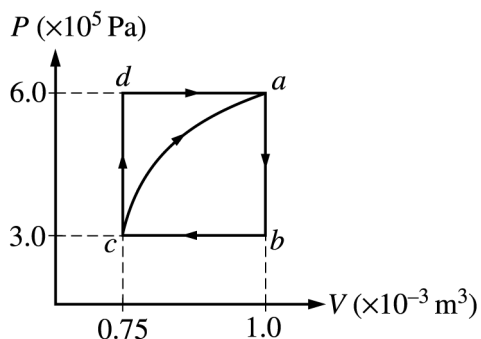
- (d) Check the appropriate spaces below to indicate the characteristics of your image.

- |                                  |                                   |  |
|----------------------------------|-----------------------------------|--|
| <input type="checkbox"/> real    | <input type="checkbox"/> upright  | <input type="checkbox"/> larger than object  |
| <input type="checkbox"/> virtual | <input type="checkbox"/> inverted | <input type="checkbox"/> smaller than object |

- (e) You complete your assignment and turn in your results to your teacher. She tells you that another student, using equipment from the same list, has found a different location for the lit candle. However, she tells both of you that the labs were done correctly and that neither experiment need be repeated. Explain why both experiments can be correct.



## 2003 AP<sup>®</sup> PHYSICS B FREE-RESPONSE QUESTIONS



5. (10 points)

A cylinder with a movable piston contains 0.1 mole of a monatomic ideal gas. The gas, initially at state  $a$ , can be taken through either of two cycles,  $abca$  or  $abcd a$ , as shown on the  $PV$  diagram above. The following information is known about this system.

$$Q_{c \rightarrow a} = 685 \text{ J along the curved path}$$

$$W_{c \rightarrow a} = -120 \text{ J along the curved path}$$

$$U_a - U_b = 450 \text{ J}$$

$$W_{a \rightarrow b \rightarrow c} = 75 \text{ J}$$

(a) Determine the change in internal energy,  $U_a - U_c$ , between states  $a$  and  $c$ .

(b) i. Is heat added to or removed from the gas when the gas is taken along the path  $abc$  ?

\_\_\_ added to the gas                      \_\_\_ removed from the gas

ii. Calculate the amount added or removed.

(c) How much work is done on the gas in the process  $cda$ ?

(d) Is heat added to or removed from the gas when the gas is taken along the path  $cda$ ?

\_\_\_ added to the gas                      \_\_\_ removed from the gas

Explain your reasoning.

## 2003 AP<sup>®</sup> PHYSICS B FREE-RESPONSE QUESTIONS

6. (10 points)

A diver descends from a salvage ship to the ocean floor at a depth of 35 m below the surface. The density of ocean water is  $1.025 \times 10^3 \text{ kg/m}^3$ .

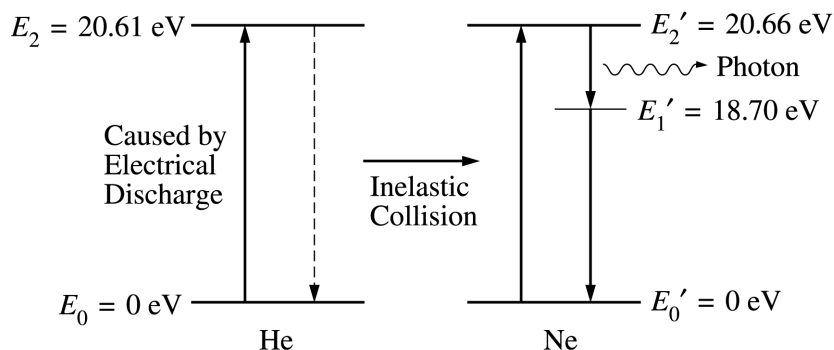
- (a) Calculate the gauge pressure on the diver on the ocean floor.  
 (b) Calculate the absolute pressure on the diver on the ocean floor.

The diver finds a rectangular aluminum plate having dimensions  $1.0 \text{ m} \times 2.0 \text{ m} \times 0.03 \text{ m}$ . A hoisting cable is lowered from the ship and the diver connects it to the plate. The density of aluminum is  $2.7 \times 10^3 \text{ kg/m}^3$ . Ignore the effects of viscosity.

- (c) Calculate the tension in the cable if it lifts the plate upward at a slow, constant velocity.  
 (d) Will the tension in the hoisting cable increase, decrease, or remain the same if the plate accelerates upward at  $0.05 \text{ m/s}^2$ ?

\_\_\_\_\_ increase          \_\_\_\_\_ decrease          \_\_\_\_\_ remain the same

Explain your reasoning.



7. (10 points)

Energy-level diagrams for atoms that comprise a helium-neon laser are given above. As indicated on the left, the helium atom is excited by an electrical discharge and an electron jumps from energy level  $E_0$  to energy level  $E_2$ . The helium atom (atomic mass 4) then collides inelastically with a neon atom (atomic mass 20), and the helium atom falls to the ground state, giving the neon atom enough energy to raise an electron from  $E_0'$  to  $E_2'$ . The laser emits light when an electron in the neon atom falls from energy level  $E_2'$  to energy level  $E_1'$ .

- (a) Calculate the minimum speed the helium atom must have in order to raise the neon electron from  $E_0'$  to  $E_2'$ .  
 (b) Calculate the DeBroglie wavelength of the helium atom when it has the speed determined in (a).  
 (c) The excited neon electron then falls from  $E_2'$  to  $E_1'$  and emits a photon of laser light. Calculate the wavelength of this light.  
 (d) This laser light is now used to repair a detached retina in a patient's eye. The laser puts out pulses of length  $20 \times 10^{-3} \text{ s}$  that average  $0.50 \text{ W}$  output per pulse. How many photons does each pulse contain?

**END OF EXAMINATION**

Copyright © 2003 by College Entrance Examination Board. All rights reserved.  
 Available to AP professionals at [apcentral.collegeboard.com](http://apcentral.collegeboard.com) and to  
 students and parents at [www.collegeboard.com/apstudents](http://www.collegeboard.com/apstudents).